

产品及应用 PRODUCTS APPLICATIONS

- ▲ 专为IEC标准连接器设计
 - ▲ 带两个保险管和开关控制
 - ▲ 三合一滤波器安全可靠、便于安装、性价比高
 - ▲ 用于集成电子设备和电子测量仪器，医疗设备及医疗特别应用
- ▲ 外形小巧、结构紧凑、便于安装
- ▲ Designed for IEC standard connectors
 - ▲ with two fuses and switch control
 - ▲ The three-in-one filter is safe and reliable, easy to install, and has a high cost performance
 - ▲ For integration of electronic devices and electronic measuring instruments, medical equipment and medical special applications

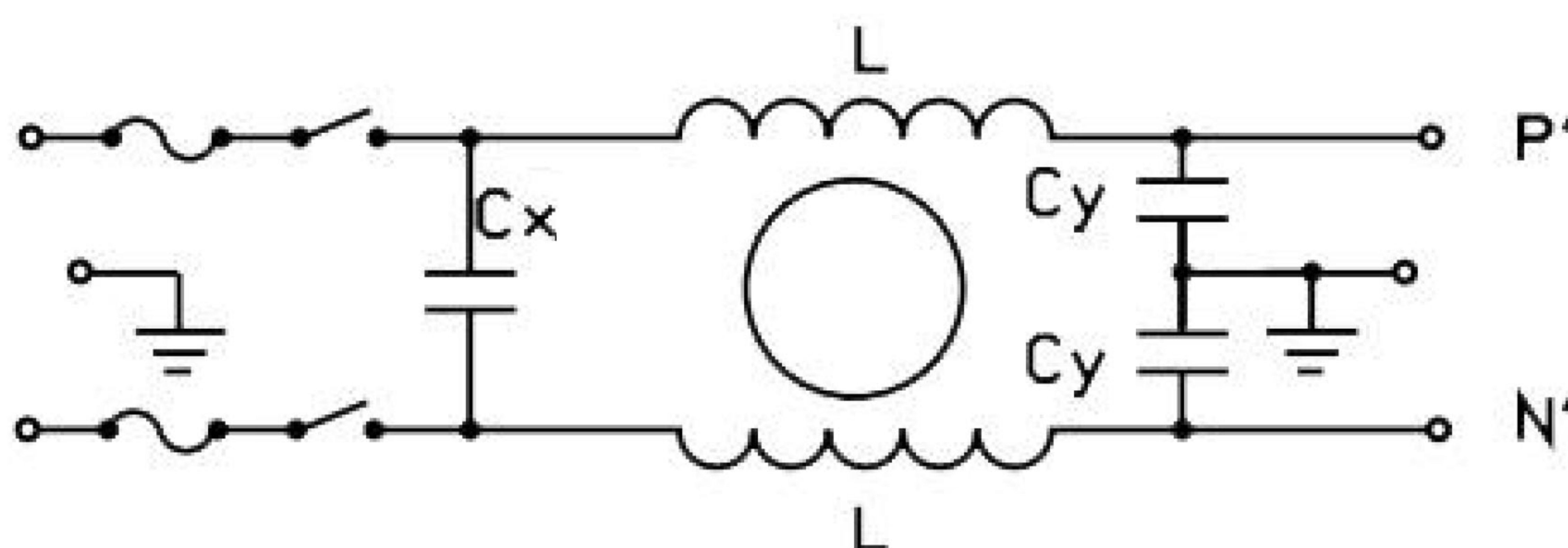


技术参数 SPECIFICATION

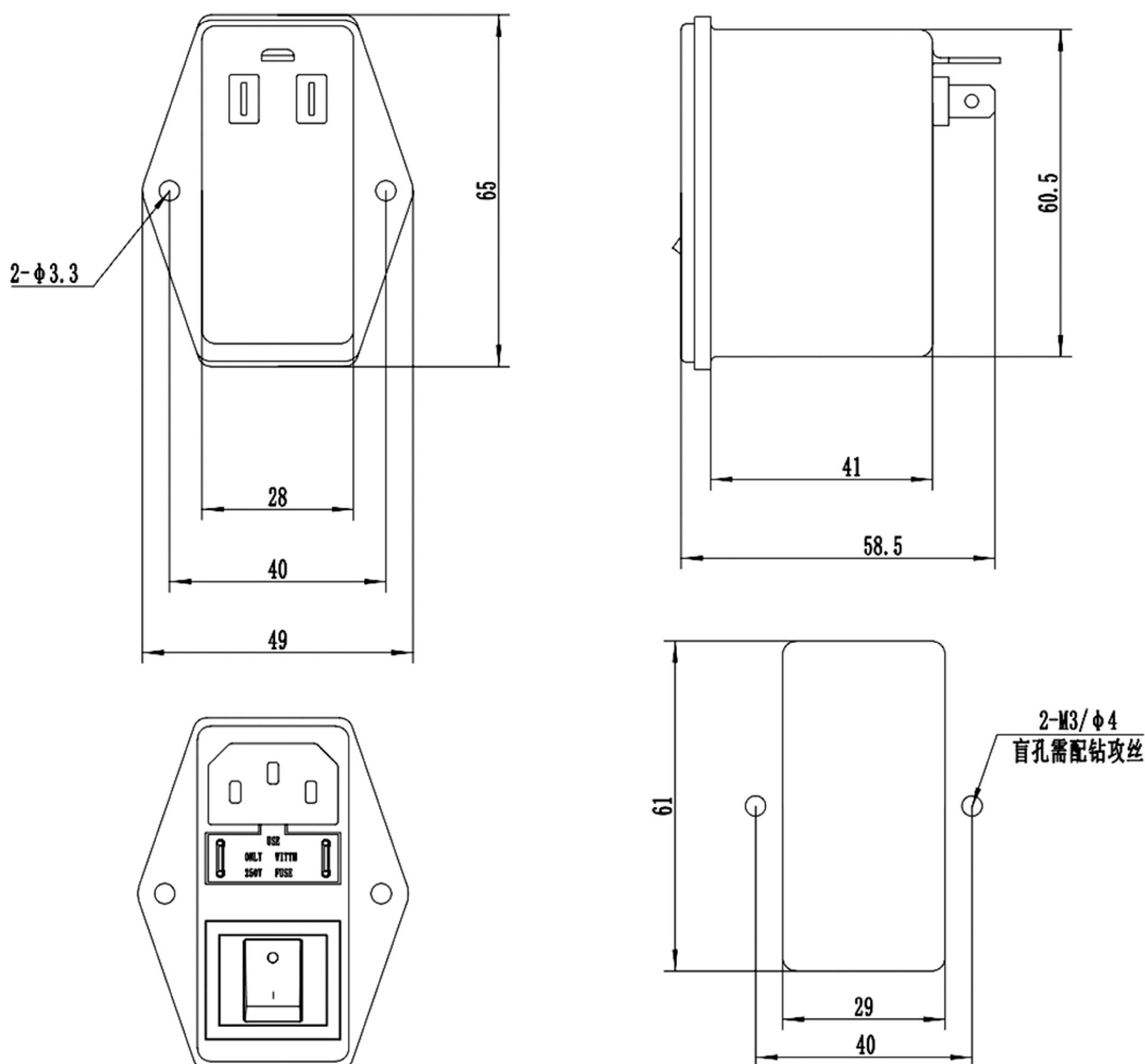
最高工作电压 Maximum operating voltage (VAC)	工作频率 Operating frequency Hz	试验电压 Hipot test voltage P-N(VDC) PN-E(VAC)		工作温度 Operating temperature Hz	绝缘电阻 Minimum insulation resistance
250	50/60	1500	1500	-25~+85°C	>200M@500VDC

产品型号 FILTER	额定电流 Current rating @40°C	泄漏电流 Leakage current	外型尺寸 Housing	电路参数 Components			重量 Weight (g)
				Lcm(mH)	Cx(nF)	Cy(nF)	
YB172-1	1A	≤ 0.5mA	C3	6	100	3.3	75
YB172-3	3A	≤ 0.5mA	C3	2.5	100	3.3	75
YB172-6	6A	≤ 0.5mA	C3	0.8	100	3.3	75
YB172-10	10A	≤ 0.5mA	C3	0.5	100	3.3	75

电路原理图 CIRCUIT DIAGRAM



外型尺寸 HOUSING AND DIMENSIONS: (MM)



安装尺寸示意图